

### Features:

- 16 Channel, 8 Service Single Fiber DWDM Mux/Demux + Express
- Channel Wavelengths: DWDM CH. xx - CH. xx+15 + Express
- Channel Spacing: 100GHz
- Reliability: Telcordia GR-1209, GR-1221
- Maximum Optical Power: 300mW
- Connector Type - All Ports: LC/UPC
- Operating Temperature: -40 to 85°C
- Storage Temperature: -40 to 85°C
- Dimensions: 100mm x 100mm x 28.5mm
- Faceplate: 130mm



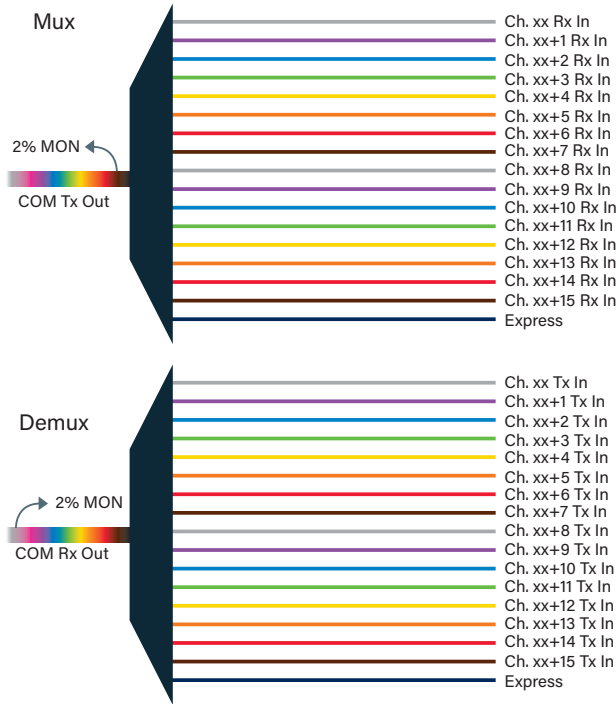
### 1. Optical Requirements

Parameter	Value
Passband, DWDM Channel Ports (Min.)	$\geq$ ITU $\pm$ 0.1nm
Passband, Express Port (Min.)	1500nm - 1600nm (Excludes: CH. xx - CH. xx+15)
Passband Ripple (Max.)	$\leq$ 0.5dB
Isolation, Adjacent Channel - DWDM (Min.)	$\geq$ 30dB
Isolation, Non-Adjacent Channel - DWDM (Min.)	$\geq$ 40dB
Isolation, Express Channel (Min.)	$\geq$ 12dB
Return Loss - All Ports (Min., Including Connectors)	$\geq$ 45dB
Directivity - DWDM Ports (Min.)	$\geq$ 50dB
Polarization Dependent Loss (Max.)	$\leq$ 0.2dB
Polarization Mode Dispersion (Max.)	$\leq$ 0.2ps

### 2. Insertion Loss

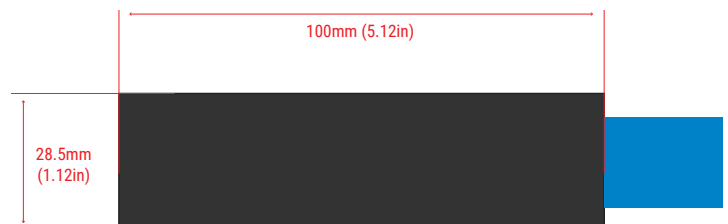
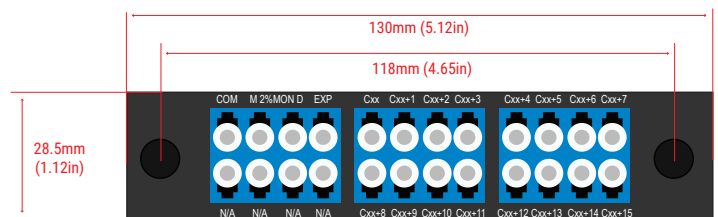
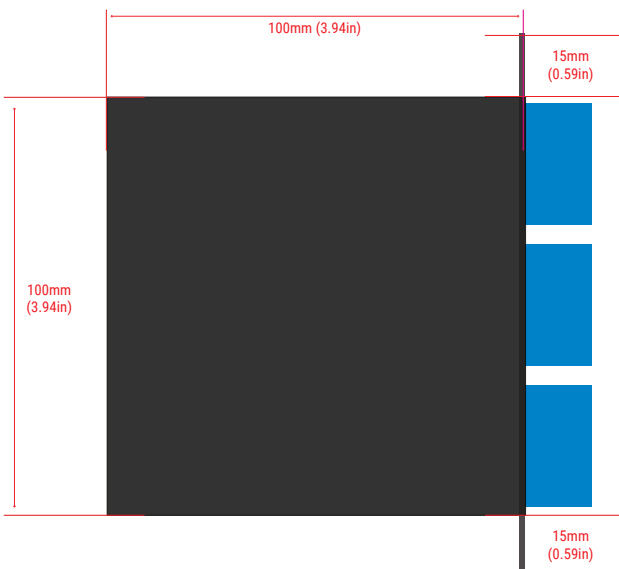
Parameter	Value
DWDM Channel Insertion Loss (Max., Incl. Connectors)	$\leq$ 5.5dB
Express Insertion Loss (Max., Incl. Connectors)	$\leq$ 4.8dB
MON Port Insertion Loss (Incl. Connectors)	24.5dB Mux/19.0dB Demux

### 3. Network Diagram



Channel	Mux		Demux	
	Typ. (dB)	Max. (dB)	Typ. (dB)	Max. (dB)
Ch. xx	1.1	1.2	5.3	5.5
Ch. xx+1	1.3	1.5	5.1	5.3
Ch. xx+2	1.6	1.8	4.9	5.1
Ch. xx+3	1.9	2.1	4.6	4.8
Ch. xx+4	2.2	2.4	4.3	4.5
Ch. xx+5	2.5	2.7	4.0	4.2
Ch. xx+6	2.8	3.0	3.7	3.9
Ch. xx+7	3.1	3.3	3.4	3.6
Ch. xx+8	3.4	3.6	3.1	3.3
Ch. xx+9	3.7	3.9	2.8	3.0
Ch. xx+10	4.0	4.2	2.5	2.7
Ch. xx+11	4.3	4.5	2.2	2.4
Ch. xx+12	4.6	4.8	1.9	2.1
Ch. xx+13	4.9	5.1	1.6	1.8
Ch. xx+14	5.1	5.3	1.3	1.5
Ch. xx+15	5.3	5.5	1.1	1.2
EXP	4.6	4.8	4.6	4.8

### 4. Mechanical Diagram

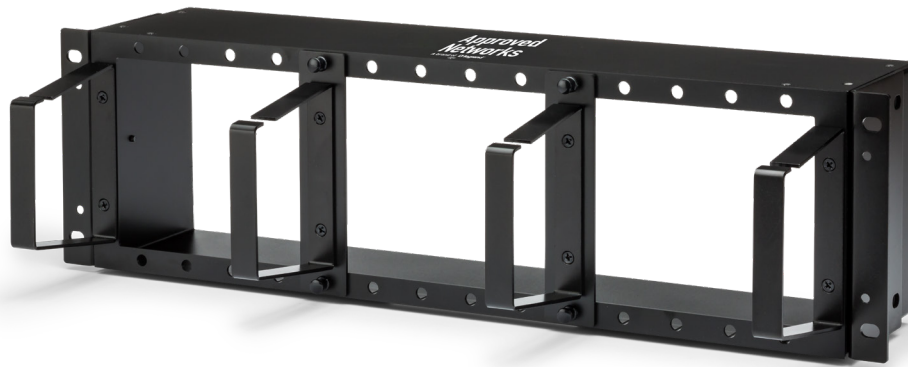


## 5. Ordering Information: Modules

Part Number	Description
ZS-DWDM-SFB-100-16-L-8-0-21-L	DWDM SF Mux 100GHz 16 CH. / 8Svcs LC, No Skips, CH. 21 Start, Monitor, EXP, LGX
ZS-DWDM-SFB-100-16-L-8-0-37-L	DWDM SF Mux 100GHz 16 CH. / 8Svcs LC, No Skips, CH. 37 Start, Monitor, EXP, LGX
ZS-DWDM-SFD-100-16-L-8-0-21-L	DWDM SF Demux 100GHz 16 CH. / 8Svcs LC, No Skips, CH. 21 Start, Monitor, EXP, LGX
ZS-DWDM-SFD-100-16-L-8-0-37-L	DWDM SF Demux 100GHz 16 CH. / 8Svcs LC, No Skips, CH. 37 Start, Monitor, EXP, LGX

## 6. Ordering Information: Mounting Options

LGX Chassis



Part Number	Description	Dimensions	LGX Slots
ZS-LGX3R-14S-CHASSIS-1923	LGX 3RU Chassis For 14 LGX Modules And Fiber Mgmt. - 19 Or 23" Rack	Fits 19" Or 23" Rack x 3RU	14



Part Number	Description	Dimensions	LGX Slots
ZS-LGX1R-3S-CHASSIS-1923	LGX 1RU Chassis For 3 LGX Modules And Fiber Mgmt. - 19 Or 23" Rack	Fits 19" Or 23" Rack x 1RU	3

## LGX Faceplate



Part Number	Description	Dimensions	LGX Slots
LGX1R-FACEPLATE	1RU Faceplate 19" With 3 LGX Slots For Passives	Fits 19" Rack x 1RU	3

## Magnetic "C" Bracket



Part Number	Description	Dimensions	LGX Slots
LGX-2U2L	2RU Magnetic Bracket With 2 LGX Slots For Passives	5.28" x 3.94" x 2.44"	2

## 7. Contact Information

Tel: 800.590.9535

Web: <http://www.approvednetworks.com>