

Features:

- 8+1 Channel Single Fiber DWDM Demux + EXP with OTDR for 8 Skip 1 Channel Plan
- Channel Wavelengths: DWDM CH. xx to CH. xx + 7 + EXP
- OTDR Port: 1625nm
- Channel Spacing: 100GHz
- Reliability: Telcordia GR-1209, GR-1221
- Maximum Optical Power: 300mW
- Connector Type - All Ports: LC/UPC
- Operating Temperature: -40 to 85°C
- Storage Temperature: -40 to 85°C
- Dimensions: 100mm x 100mm x 28.5mm
- Faceplate: 130mm



1. Optical Requirements

Parameter	Value
Passband Width, Channel Ports at -0.5dB	ITU \geq 25GHz
Passband Width, Channel Ports at -3dB	ITU \geq 72.5GHz
Passband Width, OTDR Port	1600nm - 1670nm
Band Pass Express, Express Port	1260nm - 1580nm
Band Pass Express Exclusions (Blocked Frequencies), (Min.)	CH. xx to CH. xx+1, 1260nm to 1400nm
Passband Ripple (Max.)	\leq 0.5dB
Isolation, Adjacent Channel - DWDM (Min.)	\geq 30dB
Isolation, Non-Adjacent Channel - DWDM (Min.)	\geq 40dB
Isolation, OTDR Port	30dB
Isolation, Express Channel (Min.)	\geq 12dB
Return Loss - All Ports (Min., Including Connectors)	\geq 45dB
Directivity - DWDM Ports (Min.)	\geq 50dB
Polarization Dependent Loss (Max.)	\leq 0.2dB
Polarization Mode Dispersion (Max.)	\leq 0.2ps

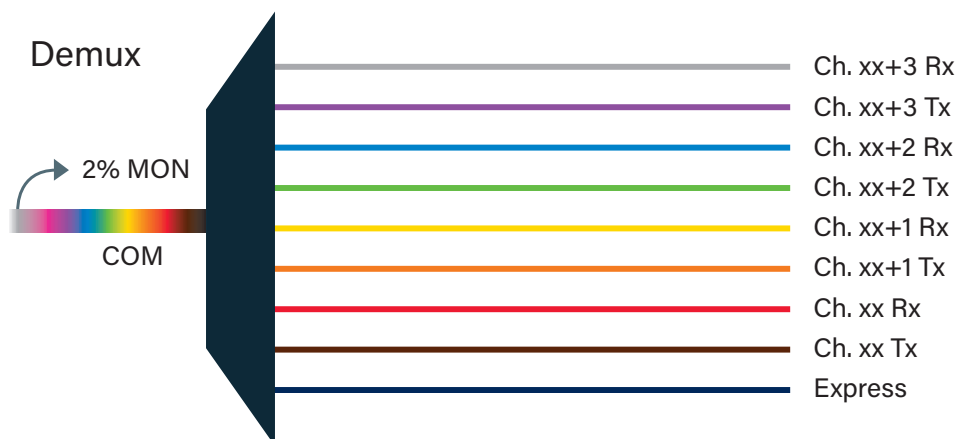
2. Insertion Loss

Parameter	Value
DWDM Channel Insertion Loss (Typ., Incl. Connectors)	3.7dB
DWDM Channel Insertion Loss (Max., Incl. Connectors)	≤ 3.9dB
OTDR Port Insertion Loss (Typ., Incl. Connectors)	0.8dB
OTDR Port Insertion Loss (Max., Incl. Connectors)	≤ 1.0dB
Express Insertion Loss (Typ., Incl. Connectors)	1.1dB
Express Insertion Loss (Max., Incl. Connectors)	≤ 1.3dB
MON Port Insertion Loss (Incl. Connectors)	22.9dB Rx/19.0dB Tx

3. Individual Channel Losses

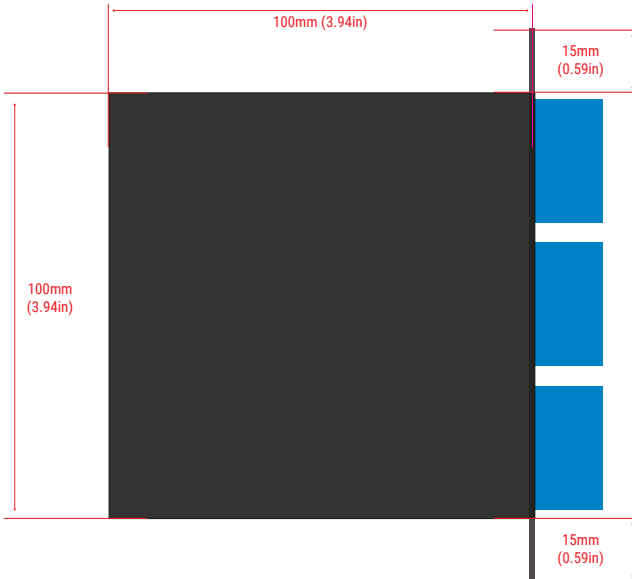
Channel	Typical	Max
Ch. 32 Rx	2.1	2.3
Ch. 32 Tx	2.4	2.6
Ch. 30 Rx	2.7	2.9
Ch. 30 Tx	2.9	3.1
Ch. 28 Rx	3.1	3.3
Ch. 28 Tx	3.3	3.5
Ch. 26 Rx	3.5	3.7
Ch. 26 Tx	3.7	3.9
EXP	1.1	1.3

4. Network Diagram

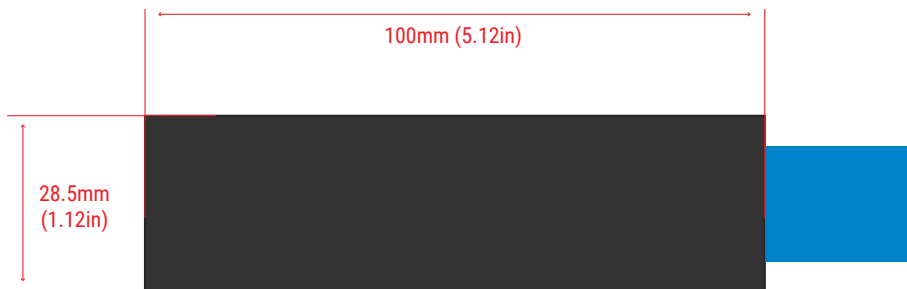
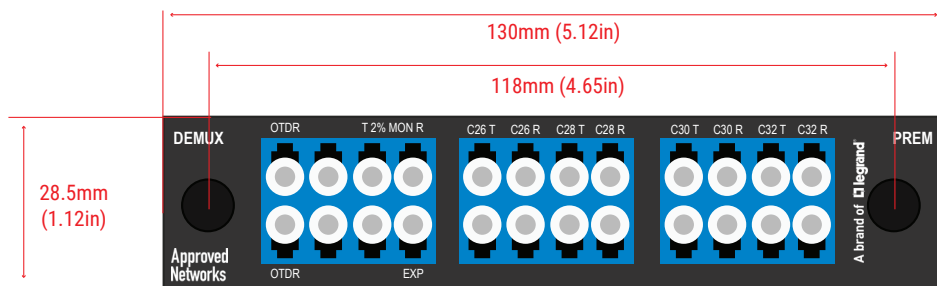


5. Mechanical Diagram

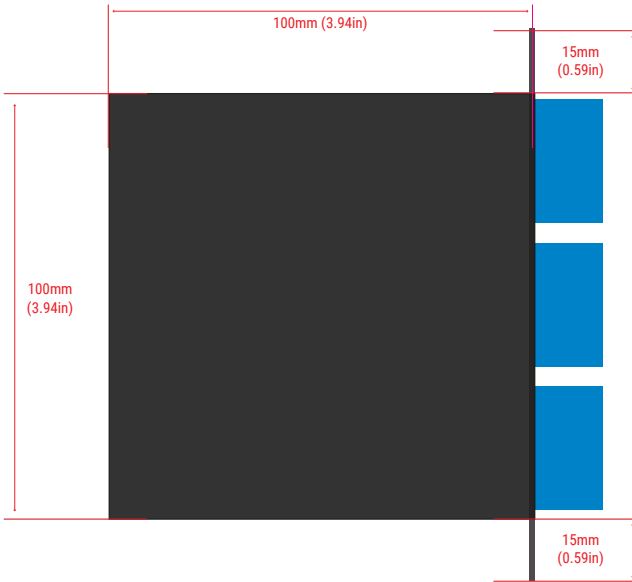
ZS-DWDM-SFDO-100-8-8-1-25-L



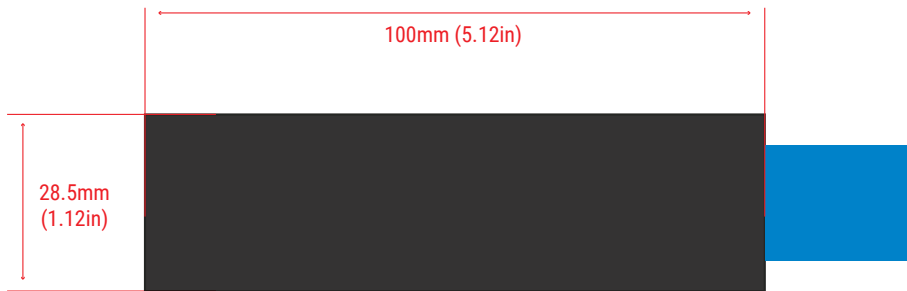
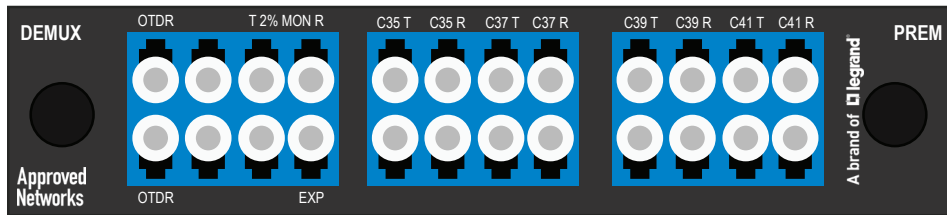
Channel	Labeling
COM	COM
C25	C26T
C26	C26R
C27	C28T
C28	C28R
C29	C30T
C30	C30R
C31	C32T
C32	C32R
EXP	EXP
2%MON	2%MON-Rx
2%MON	2%MON-Tx
OTDR	OTDR



ZS-DWDM-SFDO-100-8-8-1-34-L



Channel	Labeling
COM	COM
C34	C35T
C35	C35R
C36	C37T
C37	C37R
C38	C39T
C39	C39R
C40	C41T
C41	C41R
EXP	EXP
2%MON	2%MON-Rx
2%MON	2%MON-Tx
OTDR	OTDR



6. Ordering Information

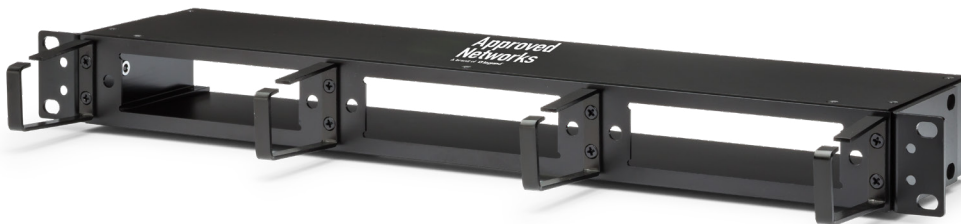
Root SKU	Part Number	Description
D5T08LC25081170	ZS-DWDM-SFDO-100-8-8-1-25-L	DWDM SF DEMUX 100GHz 8 Ch / 4 Svcs LC, 8 Skip 1, Ch 25 Start, Monitor, EXP, OTDR, LGX
D5T08LC34081170	ZS-DWDM-SFDO-100-8-8-1-34-L	DWDM SF DEMUX 100GHz 8Ch / 4Svcs LC, 8 Skip 1, Ch 34 start, Monitor, Exp, OTDR, LGX

7. Ordering Information: Mounting Options

LGX Chassis



Part Number	Description	Dimensions	LGX Slots
ZS-LGX3R-14S-CHASSIS-1923	LGX 3RU Chassis For 14 LGX Modules And Fiber Mgmt. - 19 Or 23" Rack	Fits 19" Or 23" Rack x 3RU	14



Part Number	Description	Dimensions	LGX Slots
ZS-LGX1R-3S-CHASSIS-1923	LGX 1RU Chassis For 3 LGX Modules And Fiber Mgmt. - 19 Or 23" Rack	Fits 19" Or 23" Rack x 1RU	3

Magnetic "C" Bracket



Part Number	Description	Dimensions	LGX Slots
LGX-2U2L	2RU Magnetic Bracket With 2 LGX Slots For Passives	5.28" x 3.94" x 2.44"	2

8. Contact Information

Tel: 800.590.9535

Web: <http://www.approvednetworks.com>