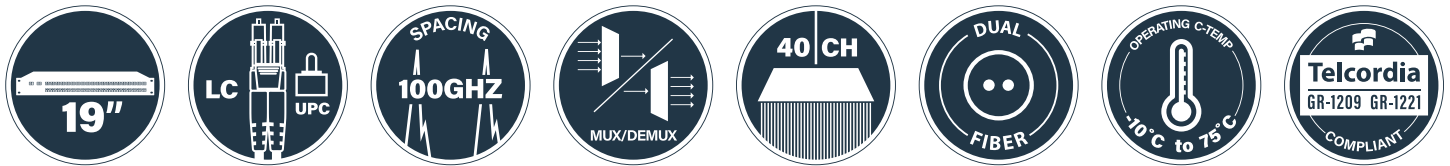
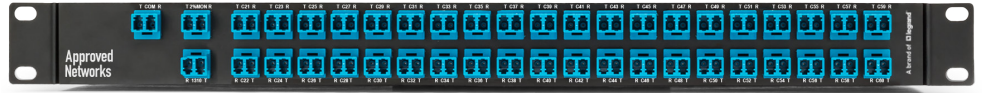


Features:

- 40 Channel Dual Fiber DWDM Mux/Demux
- Channel Wavelengths: DWDM CH. 21 - CH. 60 + 1310nm
- Channel Spacing: 100GHz
- RoHS compliant
- Reliability: Telcordia GR-1209, GR-1221
- MON Operating Wavelength: 1260nm - 1620nm
- Maximum Optical Power: 300mW
- Connector Type - All Ports: LC/UPC
- Operating Temperature: -10 to 75°C
- Storage Temperature: -40 to 85°C
- Dimensions: 250mm x 440mm x 44mm
- Faceplate: 482.6mm x 44mm



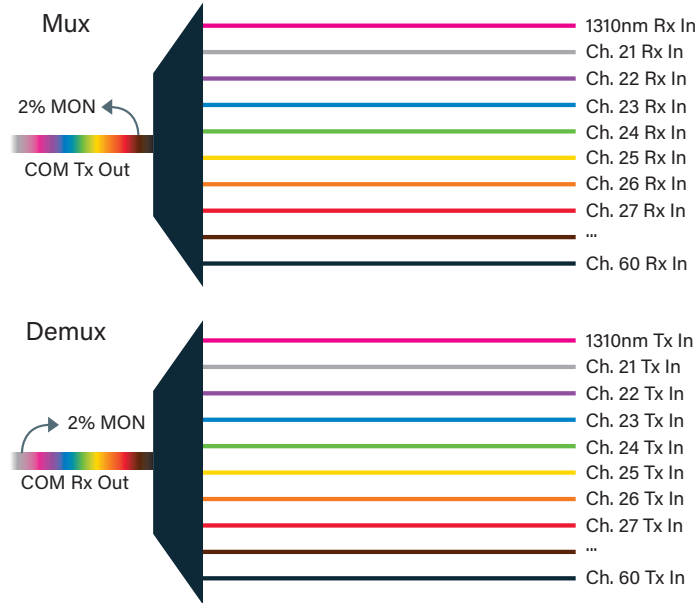
1. Optical Requirements

Parameter	Value
Passband Width	ITU \pm 0.11nm
Passband Ripple	\leq 0.5dB
Isolation, Adjacent Channel - DWDM	\geq 30dB
Isolation, Non-Adjacent Channel - DWDM	\geq 40dB
Return Loss	\geq 45dB
Directivity	\geq 50dB
Polarization Dependent Loss	\leq 0.2dB
Polarization Mode Dispersion	\leq 0.2ps

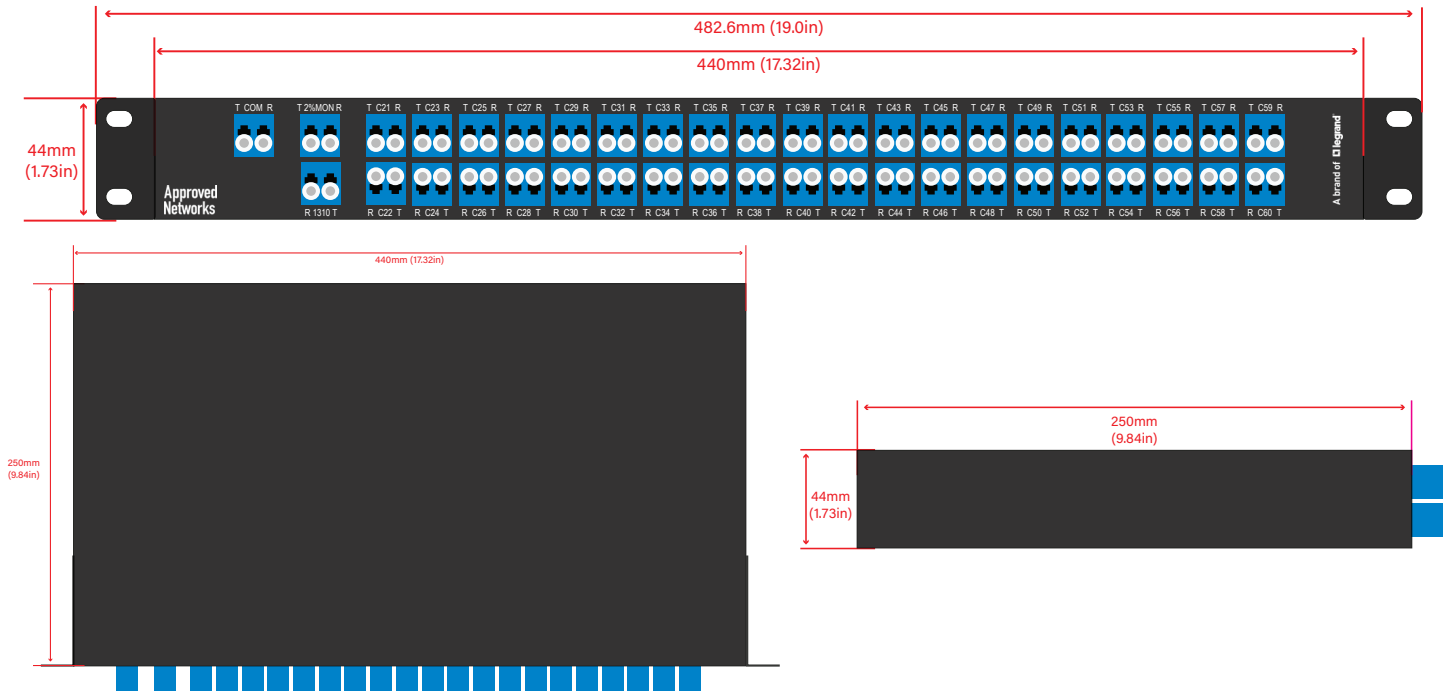
2. Insertion Loss

Parameter	Value
DWDM Channel Insertion Loss (Max.)	\leq 6.3dB
MON Port Insertion Loss	25.3dB Mux/19.0dB Demux

3. Network Diagram



4. Mechanical Diagram



5. Ordering Information: Modules

Part Number	Description
ZS-DWDM-M/D-100-40-L-8-0-21-R	DWDM M/D 100GHz 40 Channel, LC, No Skips, CH. 21 Start, 2% MON, 1310PB, 1RU

6. Ordering Information: Mounting Options

LGX Chassis



Part Number	Description	Dimensions	LGX Slots
ZS-LGX3R-14S-CHASSIS-1923	LGX 3RU Chassis For 14 LGX Modules And Fiber Mgmt. - 19 Or 23" Rack	Fits 19" Or 23" Rack x 3RU	14



Part Number	Description	Dimensions	LGX Slots
ZS-LGX1R-3S-CHASSIS-1923	LGX 1RU Chassis For 3 LGX Modules And Fiber Mgmt. - 19 Or 23" Rack	Fits 19" Or 23" Rack x 1RU	3

LGX Faceplate



Part Number	Description	Dimensions	LGX Slots
LGX1R-FACEPLATE	1RU Faceplate 19" With 3 LGX Slots For Passives	Fits 19" Rack x 1RU	3

Magnetic "C" Bracket



Part Number	Description	Dimensions	LGX Slots
LGX-2U2L	2RU Magnetic Bracket With 2 LGX Slots For Passives	5.28" x 3.94" x 2.44"	2

7. Contact Information

Tel: 800.590.9535

Web: <http://www.approvednetworks.com>