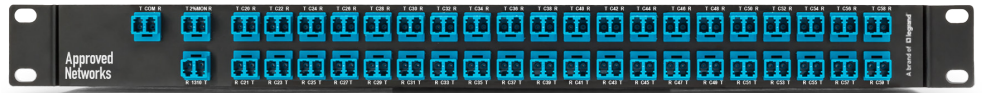


## Features:

- 40 Channel Dual Fiber DWDM Mux/Demux

- Channel Wavelengths: DWDM CH. 20 - CH. 59 + 1310nm



- Channel Spacing: 100GHz

- RoHS compliant

- Reliability: Telcordia GR-1209, GR-1221

- Operating Temperature: -10 to 75°C

- MON Operating Wavelength: 1260nm - 1620nm

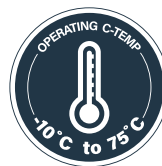
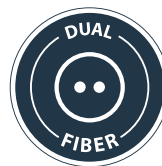
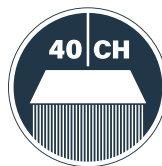
- Storage Temperature: -40 to 85°C

- Maximum Optical Power: 300mW

- Dimensions: 250mm x 440mm x 44mm

- Connector Type - All Ports: LC/UPC

- Faceplate: 482.6mm x 44mm



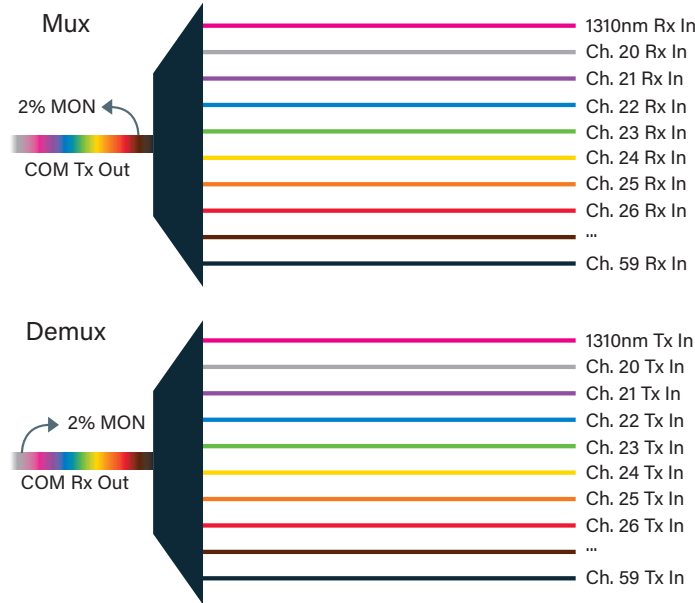
## 1. Optical Requirements

Parameter	Value
Passband Width	ITU $\pm$ 0.11nm
Passband Ripple	$\leq$ 0.5dB
Isolation, Adjacent Channel - DWDM	$\geq$ 30dB
Isolation, Non-Adjacent Channel - DWDM	$\geq$ 40dB
Return Loss	$\geq$ 45dB
Directivity	$\geq$ 50dB
Polarization Dependent Loss	$\leq$ 0.2dB
Polarization Mode Dispersion	$\leq$ 0.2ps

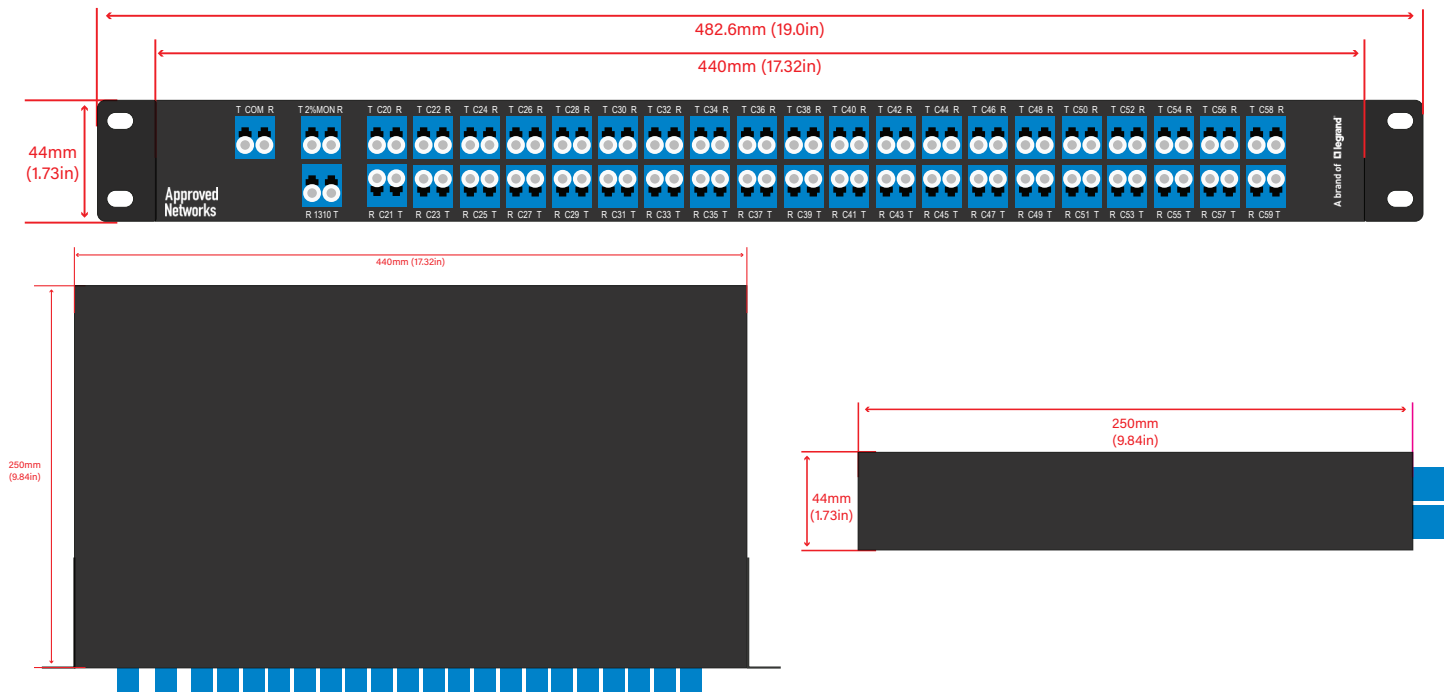
## 2. Insertion Loss

Parameter	Value
DWDM Channel Insertion Loss (Max.)	$\leq$ 6.3dB
MON Port Insertion Loss	25.3dB Mux/19.0dB Demux

### 3. Network Diagram



### 4. Mechanical Diagram



## 5. Ordering Information: Modules

Part Number	Description
ZS-DWDM-M/D-100-40-L-8-0-20-R	DWDM M/D 100GHz 40 Channel, LC, No Skips, CH. 20 Start, 2% MON, 1310PB, 1RU

## 6. Ordering Information: Mounting Options

LGX Chassis



Part Number	Description	Dimensions	LGX Slots
ZS-LGX3R-14S-CHASSIS-1923	LGX 3RU Chassis For 14 LGX Modules And Fiber Mgmt. - 19 Or 23" Rack	Fits 19" Or 23" Rack x 3RU	14



Part Number	Description	Dimensions	LGX Slots
ZS-LGX1R-3S-CHASSIS-1923	LGX 1RU Chassis For 3 LGX Modules And Fiber Mgmt. - 19 Or 23" Rack	Fits 19" Or 23" Rack x 1RU	3

## LGX Faceplate



Part Number	Description	Dimensions	LGX Slots
LGX1R-FACEPLATE	1RU Faceplate 19" With 3 LGX Slots For Passives	Fits 19" Rack x 1RU	3

## Magnetic "C" Bracket



Part Number	Description	Dimensions	LGX Slots
LGX-2U2L	2RU Magnetic Bracket With 2 LGX Slots For Passives	5.28" x 3.94" x 2.44"	2

## 7. Contact Information

Tel: 800.590.9535

Web: <http://www.approvednetworks.com>