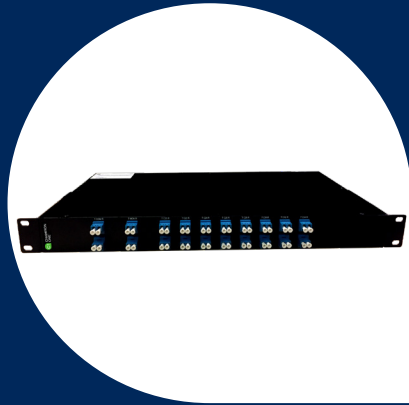


PASSIVES DATA SHEET


16 Channel Dual Fiber DWDM Mux /Demux ITU Ch. 20 – 35 with 1310nm Channel

Champion ONE's DWDM passive networking products for inside plant applications provide a cost-effective, high-reliability solution to fiber capacity challenges.

Technical Specifications

WAVELENGTH INFORMATION

DWDM channel wavelengths: ITU Ch.20–35, 100GHz spacing
 MON operating wavelength: 1260–1620nm
 Passband width: ITU ± 0.11nm

FORM FACTOR AND CONNECTOR TYPES

LC/UPC connector (all ports)

DIMENSIONS (LXWXH)

Body: 250 x 440 x 44 mm
 Faceplate: 482.6 x 44mm

TEMPERATURE RANGE

-10° C to 75° C (operating)
 -40° C to 85° C (storage)

WARRANTY

All feature a limited 5-year warranty

COMPLIANCES

RoHS compliant
 Telcordia GR-1209, GR-1221

Parameter	Value
DWDM Channel Insertion Loss (dB)	≤ 6.3
Mon Port Insertion Loss (mux/demux, dB)	≤ 25.3 / 19.0
Passband Ripple (dB)	≤ 0.5
Adjacent Channel Isolation between DWDM Channels (dB)	≥ 30
Non-Adjacent Channel Isolation Between DWDM Channels (dB)	≥ 40

Parameter	Value
Polarization Dependent Loss (dB)	≤ 0.2
Directivity (dB)	≥ 50
Return Loss (dB)	≥ 45
Polarization Mode Dispersion (ps)	≤ 0.2
Fiber Type	SMF-28e+ 900 μm
Max Power Handling (mW)	300

Ordering Information

C1 Part Number	Description
ZS-DWDM-M/D-100-16-L-8-0-20-R	DWDM 100GHz 16CH, Ch 20 start, no skips, with 2% Mon, 1310nm channel, 1RU LC

Network Diagram

